

Weekly Disease Surveillance Report



2024 Reporting Week 08: February 18 — February 24

This weekly report is produced by the DOH-Okaloosa Epidemiology Section to provide situational awareness to community partners. Data is subject to change as additional information is gathered.

Updates and Recommendations for the 2023-2024 Flu Season

- According to the CDC, three flu vaccines are preferentially recommended for people 65 years and older: **Fluzone High-Dose Quadrivalent vaccine, Flublok Quadrivalent recombinant flu vaccine, and Flud Quadrivalent adjuvanted flu vaccine.** Based on a review of available studies, these vaccines are potentially more effective than standard dose unadjuvanted flu vaccines for this age group. There is no preferential recommendation for people younger than 65 years.
- **The composition of flu vaccines has been updated.** Please visit [Information for the 2023-2024 Flu Season](#) to view the make-up of the egg-based and cell- or recombinant-based flu vaccines.
- **People with egg allergy may get any vaccine (egg-based or non-egg-based) that is otherwise appropriate for their age and health status.** All vaccines should be given in settings where allergic reactions can be recognized and treated quickly.
- Please visit [Summary: 'Prevention and Control of Seasonal Influenza with Vaccines: Recommendations of the Advisory Committee on Immunization Practices \(ACIP\)—United States, 2023-24'](#) for a complete resource regarding the 2023-2024 Influenza Season and Vaccination Recommendations.

ILI Trends

Influenza-like illness (ILI) in Okaloosa decreased during Week 08, yet is higher than the previous year's level (current level: 3.99%; last year: 2.84%). Please stay vigilant, promote vaccination, and visit the weekly [Florida FLU REVIEW](#).

COVID-19 Trends

COVID-19 hospital admission levels for Okaloosa County remained LOW for Week 08. For more information on the recommended actions based on the current levels, please visit the [CDC COVID-19 by County](#) webpage.

Contact Us:

Florida Department of Health
in Okaloosa County

Epidemiology Section

24/7 Disease Reporting:

850-833-9065

Confidential Fax:

850-833-7577

okaloosaepi@flhealth.gov

COVID-19 Corner

Week 08 Hospital Admission Level

| COVID-19 Hospital Admissions Level | New Hospital Admissions per 100K Population per Week |
|------------------------------------|--|
| LOW | 7.2 |

PREVIOUS WEEK LEVEL: LOW

| | | |
|--|---------------|-------------|
| The Community Level has been retired with the end of the federal COVID-19 Public Health Emergency (PHE). | HIGH | ≥ 20.0 |
| | MEDIUM | 10.0 - 19.9 |
| | LOW | <10.0 |

As a replacement, COVID-19 Hospital Admission Level will be used as an indicator for recommended interventions in the community based on each level and individual or community focus.

For more information on the levels and recommended actions based on the current level, please visit the [CDC COVID-19 by County](#) webpage.

In the Know: Measles in Florida

Measles cases have been reported in Broward County, as well as a travel-related case in Central Florida. As of February 22, 2024, a total of 35 measles cases were reported by 15 jurisdictions: Arizona, California, Florida, Georgia, Indiana, Louisiana, Maryland, Minnesota, Missouri, New Jersey, New York City, Ohio, Pennsylvania, Virginia, and Washington.

Because measles is highly contagious, the Florida Department of Health is providing this [linked information](#) to health care providers regarding the identification, testing, and management of suspected cases.

If you suspect measles in a patient with a febrile rash illness, please contact DOH-Okaloosa at 850-833-9065 (or your local [county health department](#)) **immediately** and review the linked information mentioned above. Suspected measles cases are required to be reported immediately to ensure prompt response and public health efforts.

For the latest information about measles, please visit the [CDC Measles For Healthcare Providers](#) resource.



Influenza-Like Illness

Week 08: February 18 - February 24

Influenza-like Illness (ILI) is defined as fever greater than or equal to 100°F AND cough and/or sore throat in the absence of another known cause.

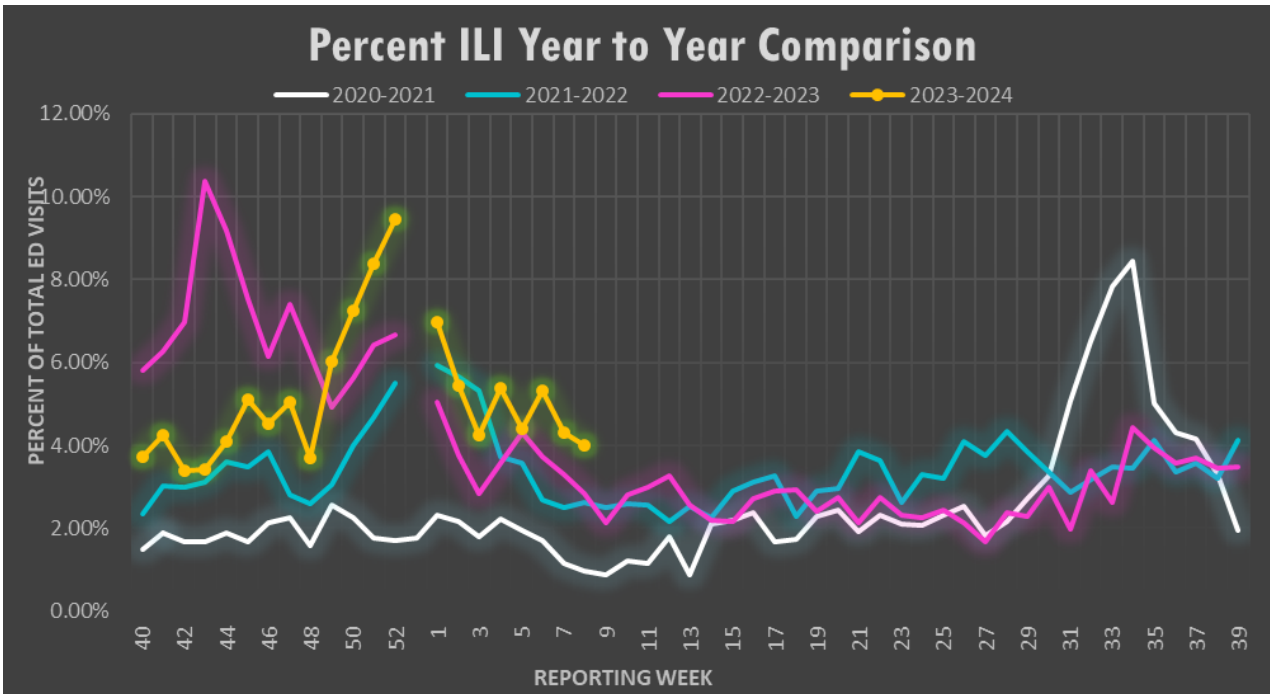


Figure 2: Annual comparison of the percent of all hospital ED visits due to ILI for Okaloosa county for the 2020-21, 2021-22, 2022-23 and 2023-2024 influenza seasons by week. Data source: ESSENCE

ANALYSIS: During Week 08, flu reporting partners and ESSENCE (a syndromic surveillance system) reported a decrease in ILI activity for Okaloosa County. The percentage of ILI ED visits in Okaloosa County decreased this week (4.30% during Week 07 to 3.99% during Week 08). Flu partners reported 51 positive rapid flu tests this week (31 Influenza A and 20 Influenza B). Over the past three weeks, no influenza specimens submitted to the state lab were positive. There were no ILI admissions or deaths reported by flu partners this week. One outbreak has been reported in the past 3 weeks. The percentage of total ILI ED visits for Week 08 is higher than that of Week 08 last year.
Note: Other respiratory syndromes can be represented by increased ILI case numbers.
 Data Source: ESSENCE

| % ILI by Age Group Week 08, 2024 | | | |
|-------------------------------------|------------|-----------------|--------------------|
| Age Range | ILI Visits | Total ED Visits | % Total ILI Visits |
| 0-4 | 19 | 143 | 13.29% |
| 5-19 | 25 | 286 | 8.74% |
| 20-34 | 23 | 505 | 4.55% |
| 35-54 | 14 | 566 | 2.47% |
| 55-74 | 9 | 607 | 1.48% |
| 75+ | 10 | 393 | 2.54% |

Data Source: ESSENCE

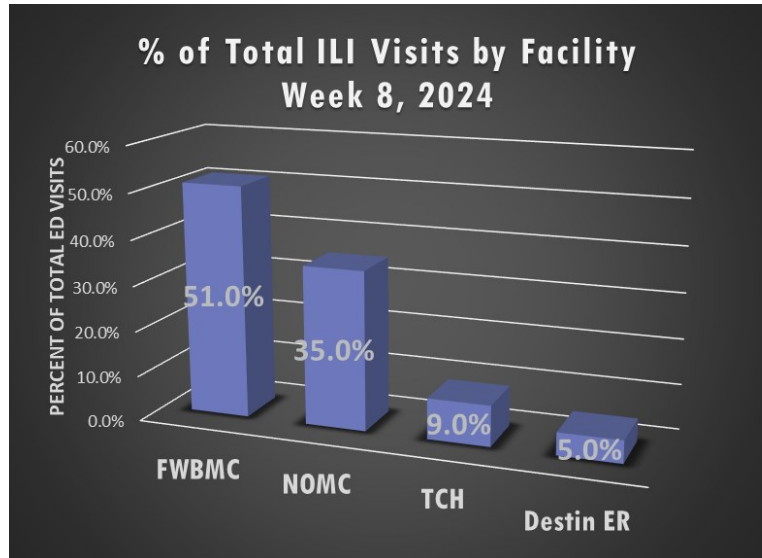


Figure 3: Hospital ED visits meeting ILI criteria stratified by facility. Percentages calculated based on total number of ILI ED visits. (n=100). Data source: ESSENCE



Syndromic Surveillance

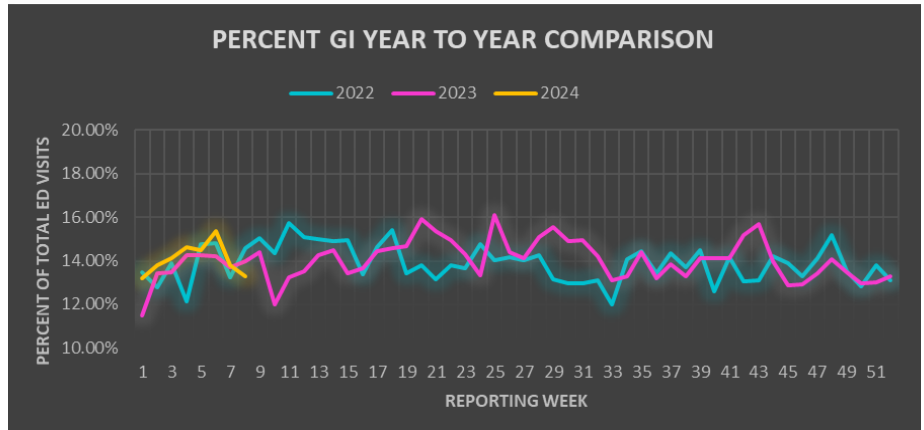
Week 08: February 18 - February 24

Gastro-intestinal Illness (GI)

Figure 4:

Annual comparison for the percent of GI for all Okaloosa County hospital ED visits week to week for 2022, 2023, and 2024.

Data Source: ESSENCE

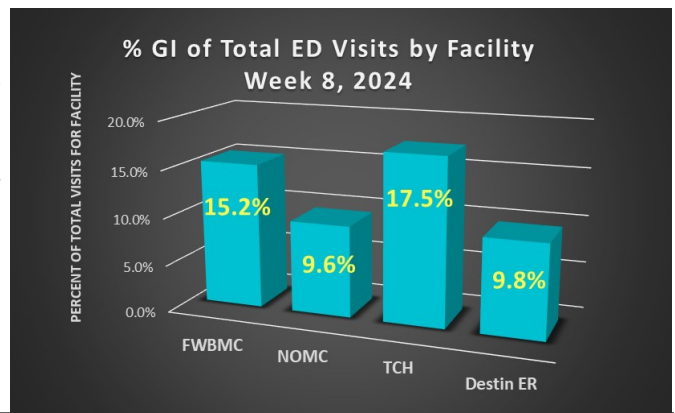


| % GI by Age Group Week 08, 2024 | | | |
|------------------------------------|-----------|-----------------|-------------------|
| Age Range | GI Visits | Total ED Visits | % Total GI Visits |
| 0-4 | 16 | 143 | 11.19% |
| 5-19 | 53 | 286 | 18.53% |
| 20-34 | 74 | 505 | 14.65% |
| 35-54 | 74 | 566 | 13.07% |
| 55-74 | 77 | 607 | 12.69% |
| 75+ | 39 | 393 | 9.92% |

Figure 5:

Hospital emergency room visits due to GI illness stratified by facility.

Data source: ESSENCE

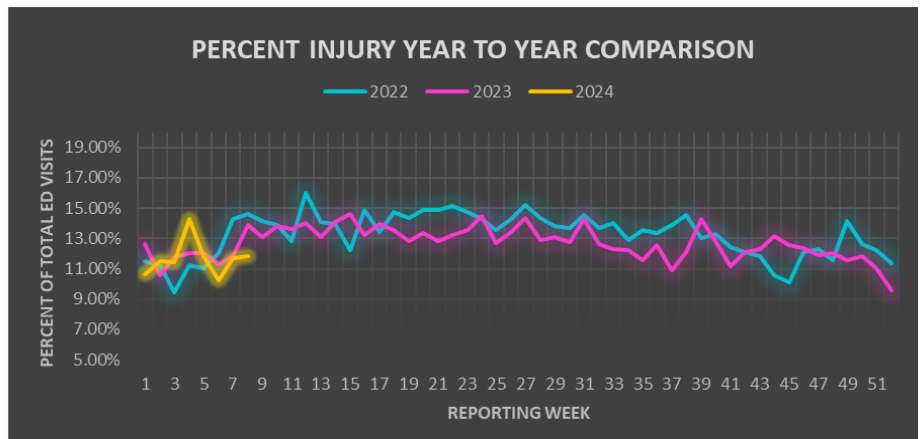


Injury

Figure 6:

Annual comparison for the percent of Injury for all Okaloosa County hospital ED visits week to week for 2021, 2022, and 2023.

Data Source: ESSENCE

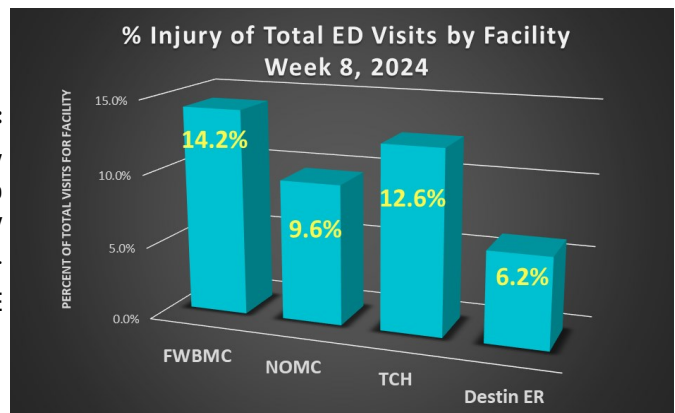


| % Injury by Age Group Week 08, 2024 | | | |
|--|---------------|-----------------|-----------------------|
| Age Range | Injury Visits | Total ED Visits | % Total Injury Visits |
| 0-4 | 20 | 143 | 13.99% |
| 5-19 | 35 | 286 | 12.24% |
| 20-34 | 47 | 505 | 9.31% |
| 35-54 | 68 | 566 | 12.01% |
| 55-74 | 57 | 607 | 9.39% |
| 75+ | 69 | 393 | 17.56% |

Figure 7:

Hospital emergency room visits due to Injury stratified by facility.

Data source: ESSENCE





Syndromic Surveillance

Week 08: February 18 - February 24

Total ED Visits by Syndrome

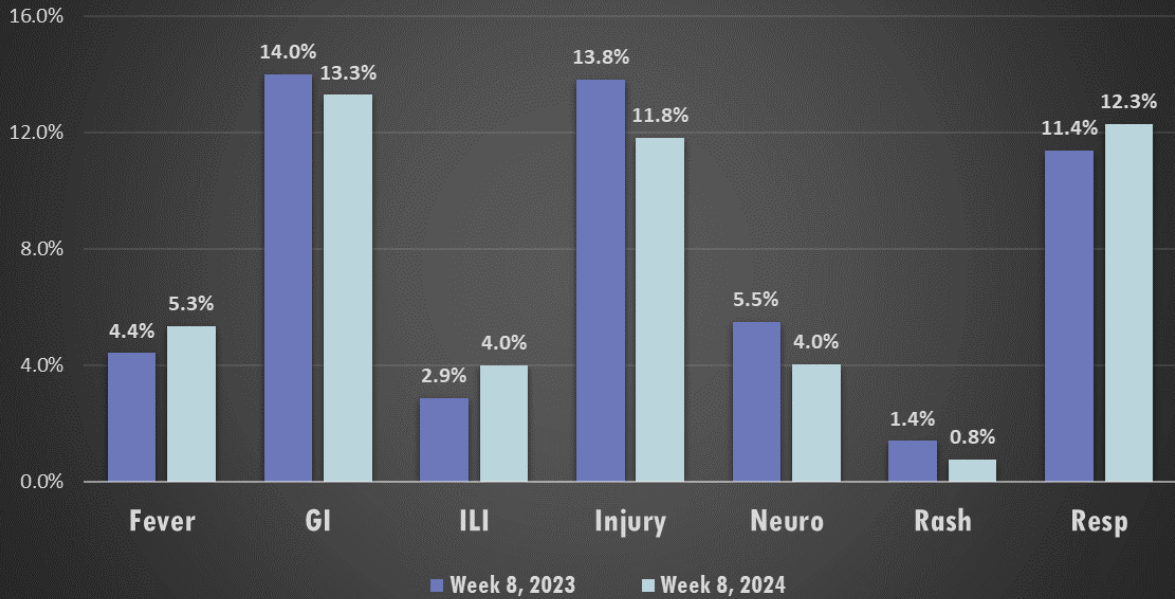
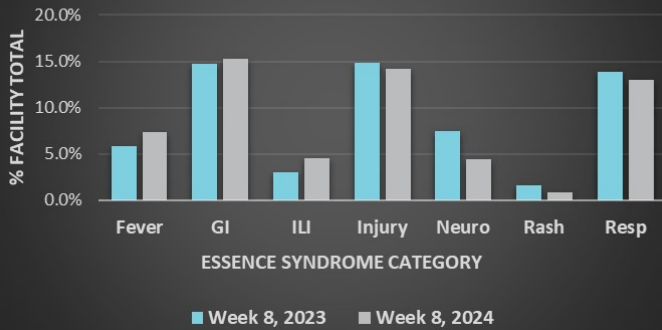


Figure 8: Hospital Emergency Department (ED) visits from 2024 Week 08 by select syndrome category. Percentages calculated based on total number of ED visits (n=2506). Some syndrome categories are not represented; therefore, represented percentages will not total 100%. Data source: ESSENCE

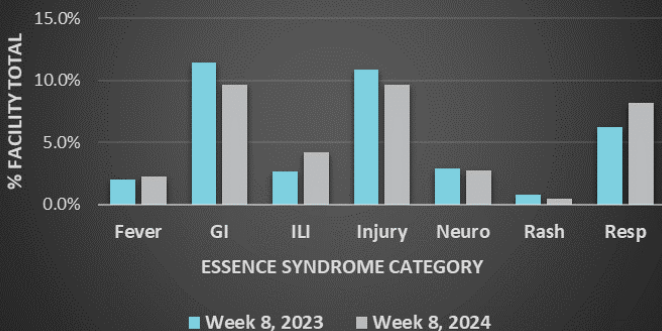
Fort Walton Beach Medical Center ED Presentations



Week 08 - Fort Walton Beach Medical Center

| Age Range | Top Syndrome | Total ED Visits for Syndrome |
|-----------|--------------|------------------------------|
| 0-4 | RESP | 29 |
| 5-19 | RESP | 32 |
| 20-34 | GI | 37 |
| 35-54 | GI | 35 |
| 55-74 | GI | 39 |
| 75+ | INJURY | 34 |

North Okaloosa Medical Center ED Presentations



Week 08 - North Okaloosa Medical Center

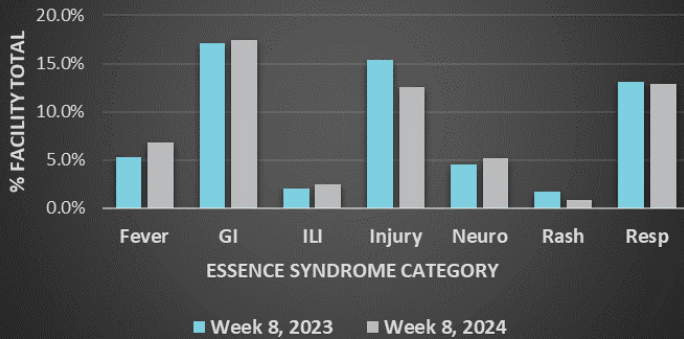
| Age Range | Top Syndrome | Total ED Visits for Syndrome |
|-----------|--------------|------------------------------|
| 0-4 | FEVER | 8 |
| 5-19 | INJURY | 11 |
| 20-34 | GI | 24 |
| 35-54 | INJURY | 22 |
| 55-74 | RESP | 22 |
| 75+ | INJURY | 17 |



Syndromic Surveillance

Week 08: February 18 - February 24

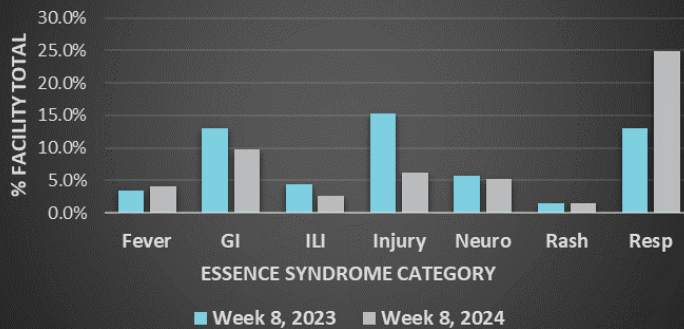
Twin Cities Hospital ED Presentations



Week 08 - Twin Cities Hospital

| Age Range | Top Syndrome | Total ED Visits for Syndrome |
|-----------|--------------|------------------------------|
| 0-4 | RESP | 7 |
| 5-19 | GI | 10 |
| 20-34 | GI | 9 |
| 35-54 | GI | 16 |
| 55-74 | GI | 17 |
| 75+ | INJURY | 15 |

Destin ER ED Presentations



Week 08 - Destin ER

| Age Range | Top Syndrome | Total ED Visits for Syndrome |
|-----------|--------------|------------------------------|
| 0-4 | RESP | 5 |
| 5-19 | RESP | 5 |
| 20-34 | GI, RESP | 4, 4 |
| 35-54 | RESP | 9 |
| 55-74 | RESP | 14 |
| 75+ | RESP | 11 |

Week 08 - Okaloosa County

| Age Group | Top Syndrome |
|-----------|--------------|
| 0-4 | RESP |
| 5-19 | GI |
| 20-34 | GI |
| 35-54 | GI |
| 55-74 | GI |
| 75+ | INJURY |



Data Source: ESSENCE